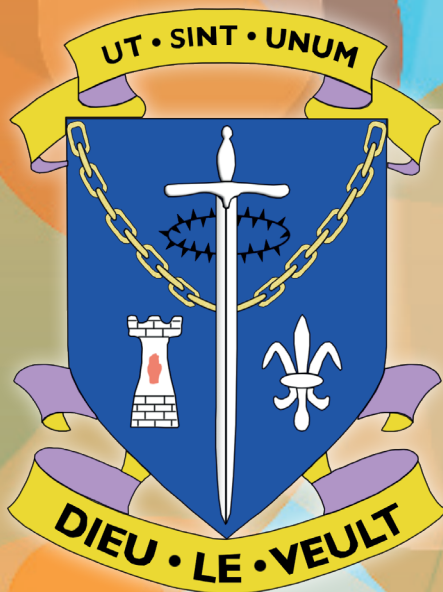


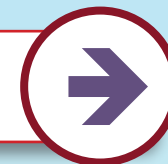
2025



6<sup>th</sup>

# St Louis Grammar School Form Prospectus

bright ideas start here



www.stlouis.org.uk

151 Newry Road, Kilkeel, County Down BT34 4EU. Tel (028) 4176 2747

# Contents

# Courses

Welcome 1

Choosing your course 3-4

Courses and levels 5

Why choose us? 6

Facilities 7

What is expected? 8

Careers 36-39

Tariffs 40-41

Labour Market Information 42-43

FAQs 44

The Arts 8-11

Business Studies 12

English 13

Nutrition & Food Science / Health and Social Care 14-15

History, Geography, Politics and T&T 16-19

Computing and ICT 20-21

Mathematics 23

Modern Languages 24-26

Religion 27

Sciences 28-30

Sociology 31

Sport 32

Technology, Engineering and Construction 33-35

# Welcome

Welcome to St Louis Grammar School 6th Form.

If you are completing your GCSEs this summer it is time for you to make some very important decisions about your future. We hope that this prospectus will provide the information you need to make the right choices.

St Louis 6th Form is open to all 16+ learners in the local area and beyond who meet the entrance criteria. We continue to offer a range of new and exciting flexible qualifications with clear pathways into third level education or the world of work. We aim to promote open and co-operative learning through the use of new technologies.

Our expert staff offer high quality teaching, guidance and support to enable you to reach your full potential in a caring environment.

Whether you wish to study academic or applied / vocational qualifications, St Louis 6th Form is for you! You can choose from a wide range of courses and study them here or for some courses in our partner schools.

We have invested heavily in new resources in order to make your time in 6th form an enjoyable and rewarding one.

## Key Contacts

Principal Mr Kevin Martin

Head of 6th Form Mr Eamonn McGlue Head of Careers Mrs Julie Devlin

Address 151 Newry Road, Kilkeel, BT34 4EU

Websites [www.stlouis.org.uk](http://www.stlouis.org.uk)

Email [info@stlouisgrammar.kilkeel.ni.sch.uk](mailto:info@stlouisgrammar.kilkeel.ni.sch.uk)

Tel 028 4176 2747

Fax 028 4176 5694

Twitter [@stlouisgrammar](https://twitter.com/stlouisgrammar) Facebook [www.facebook.com/stlouisgrammarschool](https://www.facebook.com/stlouisgrammarschool)

## Our Aims

St Louis Grammar School is a Catholic community within which both staff and students work in the pursuit of all aspects of spiritual, educational, and personal excellence.

We aim to:

- Help pupils to grow in the Catholic faith
- Provide a happy, caring and stimulating learning environment
- Provide a broad, balanced, coherent and relevant curriculum
- Establish and develop a partnership between pupils, parents and teachers
- Help pupils understand the world in which they live, to make informed decisions about their lives and to prepare them for the future

The education of sixth form students at St Louis Grammar School is regarded as a three way partnership between the school, the student and their parents / guardians.

The school is obliged to run courses in a cost-effective manner. Therefore the school reserves the right to not offer courses listed in this prospectus if there is insufficient uptake.

## Choosing the right course for you

Pupils who meet the full entry requirements will be expected to take 4 AS levels or equivalent in the first year. Alternatively, you can choose a more vocational path by studying

BTECs / AQA Level 3 National Extended Certificates or other vocational A Levels and combine these to a maximum of 4 A level equivalents in the first year. One or more A levels may be taken with our educational partner - Kilkeel High School. Please take the time to carefully read the requirements for each course.

## Post 16 Courses

**AS Level:** This is a one-year linear course composed of two or three units. Most courses are assessed by examination or coursework or a combination of both. This is graded A-E.

**A2 level:** In the second year you take two or three units and are awarded the full A level which is graded from A\*-E.

## Linear A Levels

Some A Level subjects are now "linear" in structure, meaning that only the exams taken at the end of the two-year specification count towards the final A level grade. For these subjects AS is now a stand-alone qualification, worth 40% of a full A level. Students who complete AS exams but do not continue to study the subject at A2 level will be awarded an AS grade which can be recorded within their academic portfolio.

However, whether pupils remain on in Year 14 to complete the full linear A level or not, AS exams will be taken at end of year 13, to evaluate their progress in the subject; In addition, the content of these exams will be reassessed at the end of A2.

**BTEC / AQA Level 3 National Extended Certificates:** These Level 3 qualifications are coursework based with one exam module and are graded as Pass / Merit / Distinction / Distinction \* which has equivalences to A level grades and UCAS points.

**Level 2 / GCSE:** Level 2 courses are the GCSEs / BTEC National Firsts / OCR Nationals / OCN NI and other examinations you may have taken in St Louis or in your previous school.



## Why BTEC / AQA Level 3 National Extended Certificates?

This option offers a vocational route and a more enjoyable route for those who prefer a portfolio-based course with only one exam-based module. Some pupils benefit greatly from opting for vocational courses as this raises their level of achievement.

If you enjoy a course and are confident that it matches your interest and suits your learning style, then there is every chance that you will excel.

Entry to University courses can be gained by presenting high levels of achievement in a range of Level 3 qualifications. These include BTEC Level 3 National Extended Certificates and other vocational offerings such as the AQA Level 3 Certificate / Extended Certificate in Applied Business.

### BTEC Level 3 National Extended Certificates consist of:

- 4 to 6 units of work with one or two exam components.
- Are assessed over two years
- Each unit of work is graded Distinction, Merit or Pass
- An overall level is awarded after the portfolio is completed and assessed by an examiner. This will be an overall Distinction\*, Distinction, Merit or Pass.

If you obtain an Overall Distinction in your BTEC / AQA Level 3 National Extended Certificate you may in some institutions be judged as having the equivalent of an A Level grade A and will be awarded the equivalent UCAS points (48).

If you achieve an Overall Merit in your BTEC / AQA Level 3 National Extended Certificate, you may in some institutions be considered to have the equivalent of an A Level Grade C and will be awarded the equivalent UCAS points (32).

## Does Queen's University accept BTEC / AQA Level 3 Certificates?

**Yes** - QUB will accept one applied course in an applicant's academic profile except for degree courses in Pharmacy, Medicine and Dentistry. Queen's does not ask students to achieve UCAS points, they ask for grades or the grade equivalent. They do not focus on the overall level achieved - instead they will specify the exact number of Distinctions and Merits required for each unit. In general, 6 Distinctions are considered equivalent to an A at A level. 3 Merits and 3 Distinctions is considered equivalent to a B.

## Does the University of Ulster accept BTEC and AQA Level 3 Extended Certificates?

**Yes** - The University of Ulster accepts BTEC Level 3 Extended Certificates and the AQA Level 3 Extended Certificates. The Admissions Department will specify the exact number of Distinctions and Merits required for each unit. In general, 5 Distinctions and 1 Merit is considered equivalent to an A at A level. 3 Merits and 3 Distinctions considered a B. However, some courses will require a specific level of attainment in one or more units of work and it is wise to check degree entry requirements before UCAS applications are submitted.

## Who should be cautious about selecting a BTEC Level 3 National Extended Certificate?

- Students hoping to study at a University in the Republic of Ireland (DKIT is the exception).
- Students hoping to embark on a degree courses in Medicine, Dentistry, Pharmacy and Veterinary Science at UK Universities.
- Students hoping to study at a Russell Group University (QUB accept one Applied course for a majority of courses but each of the 24 Russell Group universities set their own entry criteria)



## Who should not take more than one BTEC option?

- Students hoping to gain a place at St Mary's University College, Stranmillis College or another teacher training college in the UK.
- Students considering degree courses in Queen's where it is not permitted to take more than one applied subject / course.

## Will the BTEC Level 3 Extended Certificate in IT satisfy the conditions of entry for Computing or Software Engineering Courses at QUB/Ulster University?

The BTEC Level 3 Extended Certificate offered in St Louis is on the QCF Framework and does not have significant programming content.

It will not satisfy the requirements for higher level computing courses unless it is presented with one of the following subjects: Physics, Maths, Chemistry, Biology, Technology



## Post 16 Courses

### A Level

- Art and Design
- Biology
- Business studies
- Chemistry
- Computer Science
- English Literature
- French
- Geography
- Health and Social Care
- Nutrition and Food Science
- History
- Irish
- Mathematics
- Moving Image Arts
- Music
- Performing Arts
- Physics
- Politics
- Psychology
- Religious Studies
- Sociology
- Spanish
- Technology and Design

### BTEC

- Construction Extended Certificate
- Engineering Extended Certificate
- IT Extended Certificate
- Travel and Tourism Extended Certificate
- Sports Extended Certificate

### Other

- AQA Level 3 Extended Certificate in Applied Business
- COPE

### Levels

Pupils achieving 7+ A\*-C are expected to take 4 AS levels, or BTEC / Applied equivalents, in Lower 6th.

Pupils who do not achieve these grades can make an appointment via the school office to arrange an interview with the principal. If successful you will be expected to take 3 appropriate qualifications.

Pupils can take a combination of AS Levels and BTECs or Applied courses to a maximum of four subjects. Pupils should get advice from teachers and the Head of Careers before making their choices.

# Why Choose us?



*"I want the best facilities while I study"*

We have dedicated study facilities for 6th formers with a supervised study room, common room and computers exclusively for your use.

*"I want to get into a good university"*

Many of our pupils achieve excellent results and go on to study successfully in QUB, UU, other Irish universities and many UK universities including Oxbridge.

*"Is it easy to settle in?"*

We warmly welcome students from other schools into the 6th form and they consistently report that they find it easy to make new friends and to fit in.

*"I'm not sure what to do in the future"*

Our careers staff offer comprehensive and impartial advice and 6th form pupils have dedicated tutorials once a week to support career planning and the UCAS, CAO, Higher Apprenticeship and Post 18 Employment and Training Application Processes.

*"What support will I get while studying?"*

You will have a tutor, a Year Head, and the Head of 6th form to help you with your studies.

*"What are the staff like at St. Louis?"*

Our well-qualified, experienced staff are friendly, helpful and approachable.





## IT Suites

Pupils are given study periods in the study room when they are not attending lessons.

The study room is for quiet study or use of the ICT facilities. Pupils can also use their own laptops or suitable devices during this time.

Pupils may also listen to their own

The school has five well equipped ICT rooms as well as iPads / Chromebooks for class use, class sets of chrome books within certain departments and laptops and computers in the study room.

6th formers have exclusive access to computers in the study room and these can be booked during study periods. Pupils studying ICT, Technology, Construction, Engineering and Music may have additional periods booked into the ICT facilities.

Pupils are also encouraged to use their own laptops or other suitable devices in the study room with permission. Using these devices pupils can access the school's wireless network to use the internet.



## 6th Form Formal

It is not just pupils who study PE at A level who have access to our own fitness suite. All pupils will be able to access the fitness suite during certain times and when booked with the study supervisor.

The suite features a range of professional equipment for your use. You may use the suite in your study periods.



## Study Room

Pupils can access the common room during lunch and break times.

This is a time to relax from your studies and to socialise with your peers and catch up on the day's events.

6th formers also take on prefect responsibilities during break and lunchtime.



## Fitness Suite



## Pupils in the Sixth Form are our next generation of leaders

Sixth formers are seen as role models and must therefore always act responsibly. You may also be asked to act as a mentor to younger pupils as well as take on whole school roles such as 'Prefect' which means additional responsibilities.

If you choose St Louis 6th form you have shown you have decided to further your learning and that you want to be here. Therefore you are expected to behave in a responsible manner at all times, to be punctual to school and to lessons, and to make good use of your spare time in the study room, fitness suite and common room facilities.

You are also expected to dress appropriately. A full list of school uniform for sixth formers is included in the welcome pack. Sixth formers should take pride in their appearance.

You are encouraged to give back, to volunteer, to take part, and to be all you can be!

## As a St Louis Sixth Form pupil you are:

- Expected to work independently
- Expected to work corroboratively with staff and to show respect to teachers and fellow students
- Expected to succeed!

In order to succeed in sixth form, pupils should be aware of the 'achievement triangle'. The three points of the triangle can help lead to overall success.

**Ability** Not all pupils start with the same ability, but this will develop over the duration of the course provided you study effectively.

**Attendance** There is a link between attendance and achievement. Every lesson missed may contain vital information required for exams.

**Attitude** Pupils must want to succeed - you simply cannot afford to take a passive approach to your studies.

**Emma Quinn - Head Girl**  
My time at St. Louis has been immensely fulfilling. Over the past seven years, I have had many wonderful memories and experiences that have significantly shaped who I am today. St Louis has offered me numerous opportunities to broaden my skillset and enhance my knowledge both within and beyond the classroom, amply preparing me for further studies at university level. My teachers have always been very supportive of my career aspirations and have helped me overcome challenges and pursue my passions. I am extremely grateful for the opportunity to be head girl, a position that has allowed me to act as a role model for younger students and has furthermore given me the privilege of representing the school at various events. This experience has been instrumental in enhancing my social skills and building my confidence to prepare me for the next chapter of my life.

**Shane Quinn- Head Boy**  
During my time at St. Louis, I have made friendships that will last a lifetime. The staff and students are exceptionally friendly and approachable and have fostered an inviting environment where every individual can thrive. The teachers' unwavering dedication to their subjects and students enables students to achieve their academic potential and surpass their own expectations. The responsibilities associated with the Head Boy position have enhanced my communication skills and encouraged me to step beyond my comfort zone. St. Louis has provided me with numerous opportunities to explore my diverse interests, including golf, science, and mathematics. Additionally, I have been fortunate to partake in school trips to Italy and New York, broadening my global perspective. I eagerly anticipate the next chapter of my life and feel confident that St. Louis has thoroughly prepared me for my future endeavours and any challenges I may face along the way.





# A Level Art and Design

## Why choose GCE Art and Design?

The creative industries are a fast-growing area of the economy and are key to economic success. Northern Ireland and the UK have an established reputation in these industries. The study of Art and Design creates a pathway to a future career in a creative-industries related field. This specification is designed to broaden and deepen knowledge, skills and contextual understanding of a range of art, craft and design disciplines. It prepares students for further study in art and design or in a related field.

This qualification is designed to promote and reward:

- Independent learning;
- Personal development and motivation;
- The ability to make creative connections, find alternative approaches and take risks in creating art and design work; and

## Art and Design A Level Entry Requirements

7 GCSEs A\*-C including English, Maths and a minimum of grade B in Art.

// The Art and Design course at St. Louis allowed me to develop important skills and gave me the chance to work with different mediums. I was encouraged to work creatively in my own style.

Jennifer Hardy - Lead Graphic Artist  
Climax Studios (Past pupil)



## This course can lead to:

### Careers and further training in:

- Fine art
- Graphics design
- Interior design
- Illustration
- Fashion and textiles
- Photography
- Animation
- Theatre Design
- Three dimensional design

### Higher education in:

- Pre-degree foundation courses in Art and Design
- Degree courses in Art and Design
- Other Degree courses in university

### Creative jobs include:

Advertising; Graphic Design; Architecture; Printmaking; Teaching / Lecturing; Stage Design; Jewellery Design, Digital Multimedia, Fashion, Textiles.

## Course Units - 2 at AS / 2 at A2

- AS 1: Experimental Portfolio  
(50% AS / 20% A2)
- AS 2: Personal Response  
(50% AS / 20% A2)
- A2 1: Personal and Critical Investigation  
(60% A2 / 36% A Level)
- A2 2: Thematic Outcome  
(40% of A2 / 24% A Level)



## A Level Moving Image Arts

Moving Image Arts - this qualification is designed to help students develop their creative and critical abilities through hands on learning in the craft of moving image arts.

Moving image is a key driver of the creative industries. The rapid growth of digital media technologies has made the creative industries increasingly accessible and attractive to young people. Through the study of Moving Image Arts you will:

- Critically analyse and evaluate moving image products and texts, demonstrating knowledge and understanding of film language, forms, conventions, purposes, meanings and context.
- Show understanding of the film-making techniques and working methods used by historical and contemporary film-makers / animators in relation to their goals.
- Develop and apply ideas through investigation and experimentation with film-making techniques and processes.



### This course could lead to careers in:

- TV production
- Video editing
- Print Journalism
- Advertising
- Programme Researcher
- Broadcast Journalism
- Public relations
- Market researcher
- Television / Film / TV producer
- Film industry
- Online advertising and media

### Course units at AS:

- **Unit 1 - Creative productions:**  
Foundation portfolio - This coursework unit enables pupils to explore film language, film planning and film production (70% of AS)
- **Unit 2 - Critical response -** Pupils will critically analyse three unseen moving image clips chosen from two compulsory moving image art forms: Film and Animation (30% of AS)

### Course units at A2:

- **Unit 3 - Creative production:**  
Advanced Portfolio - This coursework unit further enables pupils to explore Film Language, Film planning and Film Production (70% of A2)
- **Unit 4 - Critical Response and Specialisation -** Pupils will further critically analyse three new unseen moving image clips chosen from two compulsory moving image art forms: Film and Animation (30% of A2)

For the coursework students must create an original and complete film or animation. Whilst you are free to choose an initial idea or theme as a starting point for your work, you must work formally and stylistically within the conventions of the chosen art form. This includes written elements.

### A Level Moving Image Arts Entry Requirements:

7 GCSEs A\*-C - Grade B or above in GCSE English / English Literature. A GCSE in Media Studies would be helpful but not essential.



## A Level Performing Arts

Performing Arts encompasses drama, dance, music and any genre that involves performing to an audience.

Participating in performing arts, whether as a performer or in the more technical production aspects, will develop your self-confidence, self-awareness, personal discipline and creativity.

Performing Arts is a collaborative discipline, involving teamwork and self-management. Employers look for these qualities in prospective employees.

### Why study Performing Arts?

Performing Arts is a growth industry in Northern Ireland. This qualification will give you opportunities to:

- research and gain insight into the industry;
- engage with effective practice; and
- prepare for employment, further training and/or study.



### This course could lead to careers in:

- Dance / Drama / Music
- TV production / Sound Engineering
- Theatre
- Costume / Set design
- Lighting Engineer
- Broadcast Journalism
- Public relations
- Make up / Special Effects
- Television / Film / TV Director
- The Film industry

### Course units at AS:

- **Unit 1** - Developing Skills & repertoire students develop their skills and apply them to practical contexts. They must produce a portfolio of evidence, including research, a skills audit, a risk assessment and a record and evaluation of their work. (internally assessed).
- **Unit 2** - Planning and Realising a Performing Arts Event - consists of planning and realising a performing arts event. Students produce a supporting document to record their work as they plan, develop and realise their performing arts event. (Externally assessed).

### Course units at A2:

- **Unit 3** - Planning for Employment - students learn about planning for employment in the performing arts industry. They produce a promotional portfolio and take part in an interview.
- **Unit 4** - Performing to a Commission Brief - students form a production company to research, plan, promote and realise a performing arts event in response to a commission brief.

### A Level Performing Arts Entry Requirements:

7 GCSEs A\*-C - A good grade in GCSE English / English Literature. A GCSE in Drama / Music would be helpful but not essential.

# A Level Business Studies

Business Studies gives insights into how and why businesses operate. It helps you to develop understanding of how decisions are made and how they affect people. The course covers a broad range of business related topics and enables students to understand the wide, varied role of business in today's society.

This course helps to develop understanding that is invaluable to those students who are approaching the workplace.

Course Units - 2 at AS / 2 at A2:

- AS 1: Introduction to Business (20%)
- AS 2: Growing the Business (20%)
- A2 1: Strategic Decision Making (30%)
- A2 2: The Competitive Business Environment (30%)

All units are exam based.

**A Level Business Studies Entry Requirements**  
7 GCSEs A\*-C including English and Maths.  
Business Studies Grade B is required or grade B in English or related subject.

**Both courses could lead to:**

**Careers in:**

- Starting your own business
- Marketing
- Sales
- Finance

- Accountancy
- Personnel Management

**Higher Education courses in:**

- Business and management degrees
- Business and IT



# Lv 3 Applied Business

The Level 3 Extended Certificate in Applied Business from AQA will suit those pupils who excel at coursework. Pupils who have taken the Applied option in the past have achieved excellent results.

**Mandatory Units:**

- Unit 1 - Financial Planning and Analysis (Exam)
- Unit 2 - Business Dynamics (Coursework)
- Unit 3 - Entrepreneurial Opportunities (Controlled assessment)

**At A2 you must complete the following mandatory units:**

- Unit 4 - Managing and Leading People (Exam)
- Unit 5 - Developing a business proposal (Coursework)

**Your teacher will choose from the following optional units:**

- Unit 6 - e-Business implementation (Coursework)
- Unit 7 - Managing an event (Coursework)
- Unit 8 - Marketing Communications (Coursework)



# A Level English Literature

## Do you want to:

- Understand the meaning of life?
- Read an exciting range of novels and poetry?
- Pursue a career in writing, law, the arts or journalism?

## If yes then AS / A2 English is for you!

Through engagement with classic and modern texts you will arrive at an understanding of human behaviour and develop your creative writing and communication skills. Visits to the theatre and poetry readings will introduce students to a new literary world and bring the subject alive!

English literature is recognised by all universities as an excellent grounding for most academic disciplines.

## A Level English Entry Requirements

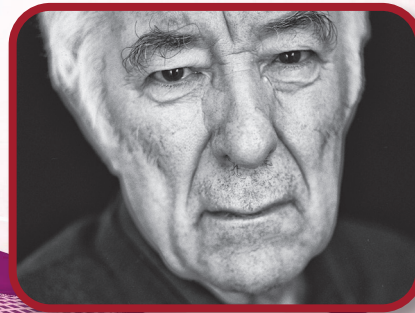
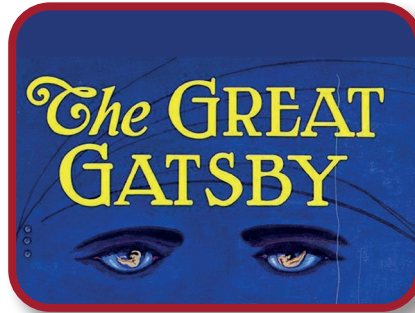
7 GCSEs A\*-C including a GCSE in English Literature and Language at a minimum at Grade

## This course could lead to:

### Careers in:

- Any field where communication skills are highly valued
- Journalism
- Media (Print / Web / Film / Theatre)

- Law
  - Teaching
  - Public Relations...
- ...and of course the opportunity to become an award winning poet or novelist such as Eoin McNamee - one of our eminent past pupils.



"Really enthusiastic teaching gives you a passion for, and understanding of literature."

## Course Units - 2 at AS and 2 at A2

- **AS 1:** The study of Poetry 1900 - Present and Drama.  
Exam  
(60% of AS, 24% of A Level)
- **AS 2:** The study of Pre 1900 Prose.  
Exam  
(40% of AS, 16% of A Level)
- **A2 1:** Shakespearean Genres  
Exam  
(20% of A Level)
- **A2 2:** Study of Poetry pre 1900 and Unseen Poetry.  
Exam  
(20% of A Level)
- **A2 3:** Internal Assessment  
(20% of A Level)

// Books are the carriers of civilisation  
Barbara W Tuchman //

## You will:

- Study a variety of texts in a vibrant and creative atmosphere
- Give creative and informed responses to texts
- Demonstrate detailed critical understanding
- Explore connections between texts
- Demonstrate understanding of the significance and influence of context

// We drink them up like water, and are bettered, yet we know not how  
Robert Louis Stevenson on books //



# A Level Nutrition and Food Science

A Level Home Economics has now been replaced with GCE Nutrition and Food Science:

- Two year course
- Three Exams
- One piece of Coursework

Why do some foods help reduce the likelihood of heart disease and cancer? How can we best supply healthy, safe food to billions of people worldwide? Are we making any progress against fighting obesity and malnutrition?

By selecting GCE Nutrition and Food Science you will discover the answer to these questions, and many more through varied, interesting and challenging learning experiences. These include: theoretical and realistic applications, seminars, guest speakers and the use of the internet as a research tool.

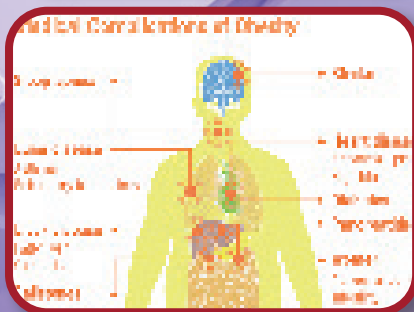
Nutrition and food science is currently high in the public's perception and there could not be a better time to develop knowledge and understanding of the subject, given current global and national food issues.

## A Level Nutrition and Food Science Entry Requirements

7 GCSEs A\*-C including Home Economics or Child Development or Biology, English and Maths.

## The course could lead to careers in:

- |  |   |  |
|--|---|--|
| <ul style="list-style-type: none"> <li>• Consumer Studies</li> <li>• Dietetics</li> <li>• Food Design and Nutrition</li> <li>• Food product</li> </ul> | <ul style="list-style-type: none"> <li>• Development</li> <li>• Food Management and Marketing</li> <li>• Food Manufacturing</li> <li>• Physiotherapy</li> <li>• Human Nutrition</li> <li>• Biology</li> </ul> | <ul style="list-style-type: none"> <li>• Environmental Health</li> <li>• Nursing</li> <li>• Food Science and Technology</li> <li>• Consumer Business Management</li> <li>• Medicine</li> </ul> |
|--|---|--|



Course - 2 units at AS and 2 units at A2

- **AS 1 - Principles of Nutrition:** 1 hour 30 minutes exam. Completed in Year 13. Worth 80 Marks.
- **AS 2 - Diet, Lifestyle and Health:** 1 hour 30 minutes exam. Completed in Year 13. Worth 80 Marks.
- **A2 1 - Option A: Food Security and Sustainability OR Option B: Food Safety and Quality:** Teacher chooses either Option A or Option B to study at A2 year. 2 hours 30 minutes exam. Completed in Year 14. Worth 85 Marks.
- **A2 2 - Research Project:** Internal Assessment. Students complete a 4000 word research based project. Teachers mark the projects and CCEA moderate the results.

// I chose to do NFS for A Level as I always enjoyed learning about nutrition during GCSE Home Economics and the food and nutrition industry intrigued me. I loved the fact that there was a wide range of topics involving Nutrition and Consumerism. I thoroughly enjoyed all aspects of the course.

Ellen Boden. Past Pupil

# A Level Health and Social Care

The A Level in Health and Social Care has been developed to:

- Equip students with knowledge, understanding and skills for success in employment in the health and / or social care sector
- Provide specialist studies relevant to health and social care progressions
- Develop the ability of learners to contribute to the health and social care environment through effective use and combination of the knowledge and skills gained in different parts of the programme
- Develop skills and techniques, and personal qualities and attitudes essential for successful performance in working life and thereby enable learners to make an immediate contribution to employment.



## A Level Health and Social Care Requirements

7 GCSEs A\*-C including English and Mathematics including at least a B in English. A GCSE in Child Development or Home Economics may be helpful though not essential.

## This course could lead to:

- Nursing
- Health and Social Care
- Child Care
- Caring Profession
- Social Work
- Health promotion
- Lecturing
- Care Home Management
- Health and Safety Officer

There are many different areas of study depending on the units taken, some of the main areas include:

- Communicating in Health and Social Care Organisations
- Principles of Health and Social Care Practice
- Health and Safety in the Health and Social Care Workplace
- Personal and Professional Development in Health and Social Care
- Working in Partnership in Health and Social Care
- The Role of Public Health and Social Care
- Managing Financial Resources in Health and Social Care
- Influences on Health and Social Care Organisations
- Health Promotion

This qualification provides a thorough grounding in the key concepts and practical skills required in the Health and Social care sector and is recognised by employers. It also develops skills and techniques, and personal qualities and attitudes essential for successful performance in working life.



# A Level History

GCE History can help develop and deploy a range of important skills such as collecting and evaluating information, independent thought, weighing up the evidence that you have found and putting a case together to support your conclusions.

By studying History you will be able to build upon your knowledge and understanding of past events and the impact those events have on our world today.

This in turn gives you a better understanding of the consequences of past actions on civilisations and a greater empathy for people of different cultures today.

History can open up a wide range of opportunities for further and higher education and interesting and rewarding careers.

History is much more than reading about past events!

## A Level History Entry Requirements

7 GCSEs A\*-C including English. Students should have obtained at least a grade B in History at

## This course could lead to careers in:

- Media
- Politics
- Library or information work
- Writing or editorial work
- Teaching
- Lecturing
- Business
- Civil Service / Solicitor / Barrister
- Archaeologist
- Archivist
- Historical Researcher



## Course Units - 2 at AS and 2 at A2

In each of the units at AS and A2 there are a number of options and you will study one option in each unit. The units are assessed through examinations.

- **AS 1:** Historical investigations and interpretations - Germany 1919 - 1945
- **AS 2:** Conflict and Change in Europe and Russia 1914 - 1941
- **A2 1:** Change over time - Clash of Ideologies 1900 - 2000
- **A2 2:** Historical investigations and interpretations - Partition of Ireland 1905 - 1923

## Results

A Level History results are excellent with a pass rate of 100% A\*-C over a number of years.

70% of students achieved A\*/B in 2018.

// We are not makers of History.

We are made by History.

Martin Luther King

//



## A Level Geography

Geography offers students the opportunity to examine the way in which we interact with our physical environment.

Aspects of Human Geography will be studied with a particular focus on the evaluation of initiatives to address issues in our society. Students will also gain valuable field work and decision making skills.

In order to obtain good results students must become familiar with the specifications, develop a high level of note-taking and case study development and develop an effective approach to examinations utilising past papers and mark schemes.

It is the skills of data handling and the insight into decision makings as well as the specialist knowledge and understanding of the interactions between the physical and human world which can lead to a variety of career pathways.

**A Level Geography Entry Requirements**  
7 GCSEs A\*-C including GCSE Geography



### Course Units - 2 at AS / 2 at A2

- **AS 1:** Physical Geography. 1 hour and 15 minutes examination assessing 3 topics; Fluvial Systems, Ecosystems and Weather/Climate.
- **AS 2:** Human Geography. 1 hour 15 minutes examination assessing 3 topics; Population, Settlement Change and Measuring Development.
- **AS 3:** Fieldwork Skills and Techniques in Geography. 1 hour examination based on Fieldwork. Plant Succession in a Psammosere (Sand Dune Ecosystem at Murlough Nature Reserve)
- **A2 1:** Physical Geography. Physical Processes, Landforms and Management assessing 2 topics; Plate Tectonics and Tropical Ecosystems. 1 hour 30 minutes examination
- **A2 2:** Human Geography. Processes and Issues in Human Geography assessing 2 topics; Sustainable Settlement and Tourism. 1 hour and 30 minutes examination
- **A2 3:** This is a compulsory decision-making exercise in the form of a case study. 1 Hour and 30 minutes examination

### This course could lead to:

- Teaching
- Environmental Planning
- Land Surveying
- Marketing
- Town and Country Planning
- Traffic Management
- Travel and Tourism
- Natural Conservancy
- Finance
- Public Relations

// Geography proved to be more than just a subject to be studied at A Level. I soon realised its relevance to every aspect of everyday life.  
**Past Pupil**



# BTEC Travel and Tourism

The travel and tourism industry is one of the world's largest economic sectors, generating over 10% of the world's GDP and supporting over 300 million jobs. This qualification is ideal for students who are interested in the travel industry or the world of business. It is not necessary to have studied Travel and Tourism at GCSE.

How will it be assessed and delivered?

Units 1 & 2 are assessed externally. The remaining units are coursework which may require you to write essays and produce PowerPoints by an agreed deadline.



## BTEC Travel and Tourism Entry Requirements

6 GCSEs A\*-C. If you have studied BTEC Level 2 Travel and Tourism this will be of benefit.

### This course could lead to:

This qualification provides you with skills and knowledge relevant to a wide range of university courses.

It gives an excellent foundation to the study of any travel or business-related

degree course. It may be particularly useful if you are looking to go into employment after A Level.



## UNIT 1: THE WORLD OF TRAVEL AND TOURISM

- This unit provides the foundation for learners to study other units in travel and tourism. They will explore the key components and scale of the industry, using data to analyse key trends and their impact. It is assessed by a 1.5 hour written exam (25% of total qualification).

## UNIT 2: GLOBAL DESTINATIONS

- Learners investigate and analyse information regarding the features and appeal of global destinations, travel planning, and the factors and trends affecting the changing popularity of global destinations.
- Students will complete the practical work-related task during a 3-hour written exam session (33.3% of total qualification).

## UNIT 3: MARKETING IN TRAVEL AND TOURISM

- Learners investigate the use of marketing in travel and tourism organisations and how to meet customer expectations to inform a promotional campaign of their own design (25% of total qualification).

## UNIT 9: VISITOR ATTRACTIONS

- Learners develop analytical skills as they investigate the nature and role of both built and natural visitor attractions, their commercial success, appeal, response to diverse visitor needs and the importance of delivering a memorable visitor experience (16.6% of total qualification).



# A Level Government and Politics

**Government and Politics:** Do you want to understand how decisions are made in the modern world? If you do, then **Government and Politics** is for you.

If you have an interest in finding out more about political systems and ideas and how political change can be brought about, then this course can help you achieve this.

The course will help to develop your knowledge and understanding of political systems and who has the authority and power to make political decisions.

You will learn about individual rights and responsibilities and compare how government works in different countries.

This course is perfect for pupils who enjoy analysing and evaluating information, using source material and weighing up arguments.

## A Level Government and Politics Entry Requirements

7 GCSEs A\*-C including English. You should have obtained at least a Grade B in GCSE English.

### This course could lead to:

- Law
  - Business
  - Finance
  - Government services
  - Education
  - Journalism
  - Public relations
  - Political research
  - The Media
- This course is well regarded by universities and employers.



## Course Units - 2 at AS and 2 at A2

In each of the units at AS and A2 there are a number of options and you will study one option in each unit.

The units are assessed through examinations.

- **AS 1:** The Government and Politics of Northern Ireland
- **AS 2:** The British Political Process
- **A2 1:** Comparative Government: The UK and Ireland
- **A2 2:** Political Power

## Past results

A Level Politics results are excellent with a pass rate of 100% A\*-C over a long number of years. In 2017 and 2018 100% of students achieved A\*-C.

The study of Government and Politics encourages you to become actively involved as a citizen and helps you to develop your critical thinking and communication skills.

The course can provide a sound foundation for further study of politics and related courses in higher education.

// I have come to the conclusion that politics is too serious a matter to be left to the politicians.  
**Charles de Gaulle**

# BTEC Level 3 in IT

The Pearson Level 3 qualification in IT will suit pupils who enjoy IT and are looking for a career in the IT sector. This is a new qualification that combines the creativity of coursework along with the challenge of exams.

The course aims to develop skills in web design, database management, social media as well as learning the core concepts of IT systems. This qualification will provide the pathway for those students looking to begin a career in web application development, software analyst and design, cybersecurity or systems administration. Within the qualification students complete four units, two of which are compulsory with the other two being coursework based.

The work for each unit is graded as either Pass (E Grade), Merit (C Grade) or Distinction (A Grade). This post 16 qualification will suit students who have studied GCSE Digital Technology (either Multimedia or Programming), though a GCSE in these subjects is desirable, it is not required.

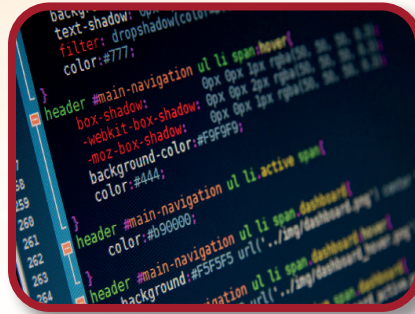
BTEC Level 3 qualifications provide transferable knowledge and skills that prepare learners for progression to university. These include:

- the ability to learn independently
- the ability to research actively and methodically
- the ability to be active group members.

## This course could lead to careers in:

- IT
- Computing
- Business and Business Management
- Media
- Web / Multimedia design

- Software Development
- Games Design
- Programming
- Computer Science
- Application Programming



## Units

- **Unit 1:** Information Technology Systems - Learners study the role of computer systems and the implications of their use in personal and professional situations. Learners will explore the relationships between the hardware and software that form an IT system. (Exam)
- **Unit 2:** Creating Systems to Manage Information - Learners will examine the structure of data and its origins, and how an efficient data design follows through to an effective and useful database. (Controlled assessment)
- **Unit 3:** Social Media in Business - Learners will explore different social media sites, the ways in which they can be used and the potential pitfalls when using them for business purposes. Learners will develop and implement a plan to use social media strategies for business purposes to achieve specific aims and objectives. (Coursework)
- **Unit 6:** Web Design - In this unit, learners will review existing websites – commenting on their overall design and effectiveness. Learners will use scripting languages such as Hypertext Markup Language (HTML), Cascading Style Sheets (CSS) and JavaScript® and a simple text editor, or rapid application development tools. Lastly, learners will reflect on the website design and functionality using a testing and review process. (Coursework)



# A Level Computer Science

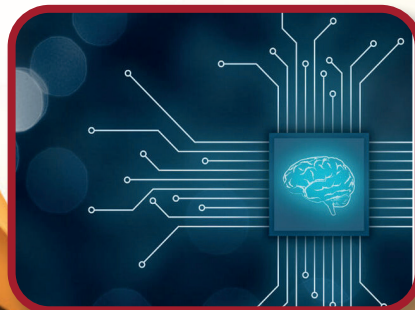
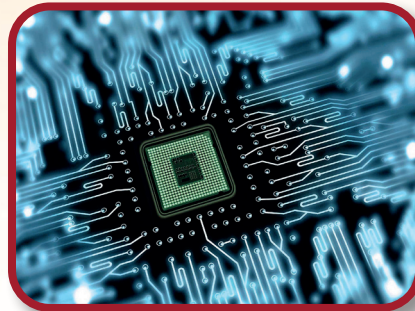
The AS/A level Computer Science specification from WJEC provides learners with an in-depth understanding of the fundamental concepts of computer science and a broad range of flexible and interesting study opportunities.

This specification enables the school to concentrate on innovative delivery of the course by having a streamlined, uncomplicated, future-proof structure, with realistic technological requirements.

In Year 1 students complete two modules of work. Unit 1 is examined through a written exam and students will study various aspects of the IT sector including hardware, software systems, databases, methods of communication and moral & ethical issues linked to IT.

The second unit focusses on software development and examines areas such as program construction, algorithms and programming through Python. This unit culminates in an online exam where students write a solution to an unseen problem using Python.

During the completion of the project students learn modern day programming skills such as reading and writing to a database, real time processing of data, complex communication between their program and its users including SMS and email and the creation of complex reports.



## This course could lead to careers in:

- IT
- Computing
- Business and Business Management
- Media
- Web / Multimedia design
- Software Development
- Games Design
- Programming
- Computer Science
- Application Programming

## Units

- **Unit 1:** Fundamentals of Computer Science - 25% of the qualification - 2 Hr written exam. This unit investigates computer architecture, communication, data representation, data structures, software applications, programs, algorithms, logic, programming methodologies and the impact of computer Science on society.
- **Unit 2:** Practical programming to Solve Problems - 15% of the qualification. The unit consists of a series of set tasks completed on-screen by candidates. These tasks assess practical application of knowledge and understanding and will require the use of Visual Basic.Net, Python or Java.
- **Unit 3:** Programming and System Development - 20% of the qualification - 2Hr written exam. This unit investigates programs, data structures, algorithms, logic, programming methodologies and the impact of computer science on society.
- **Unit 4:** Computer Architecture - 20% of the qualification - 2hr written exam - This unit investigates computer architecture, communication, data representation, organisation and structure of data, programs, algorithms and software applications.
- **Unit 5:** Programmed Solution to a Problem - 20% of Qualification - Non exam. Students design, implement, test and evaluate a computerised solution to a problem chosen by the candidate.

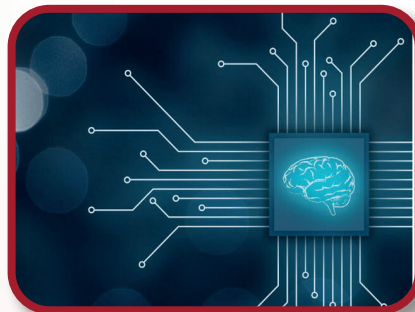
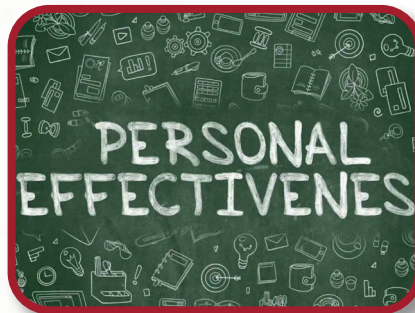
## LV 3 Certificate of Personal Effectiveness

The CCEA Level 3 Certificate of Personal Effectiveness (CoPE) rewards the achievement of young people who take part in a variety of activities that seek to develop their personal, key and employability skills. CoPE at Level 3 has recognition from UCAS and is worth 16 UCAS points. This is regarded as a Grade B at AS level.

To meet the specification, students must demonstrate evidence of skills development to Level 3 in the following six areas:

- Introduction to working with others
- Introduction to improving their own learning and performance
- Introduction to problem solving
- Planning and carrying out a piece of research
- Communicating through discussion
- Planning and giving an oral presentation

Teachers and parents have always recognised that learning is not just about what happens in the classroom. Learning outside the classroom can also contribute significantly to personal development. CoPE provides a framework for the development, assessment and accreditation of skills achieved through a wide range of enrichment. Students who choose CoPE will take a high level of responsibility for their own learning which will enhance their CV and improve their employability skills. Students can obtain recognition and accreditation while at the same time giving something back to their community.



Assessment is through internally assessed portfolios; there are no external written examinations. It is 100% coursework based. Here in St. Louis, the course will be taught for six periods a week in Year 13.

### Units

#### Module 1: Active Citizenship

- Challenge A: Community action
- Challenge B: Community placement

#### Module 2: Work Related Activities

- Challenge A: Work experience
- Challenge B: Business enterprise

#### Module 3: Career Planning

- Challenge A: Career options
- Challenge B: Application for higher education

#### Module 4: Global Awareness

- Challenge A: International travel and experience
- Challenge B: Global research

#### Module 5: Enrichment Activities

- Challenge A: Skill development
- Challenge B: Leisure pursuits

#### Module 6: Research and Presentation Skills

- Challenge A: Research project
- Challenge B: Presentation skills.



## A Level Mathematics

### Do you wish to:

- Show prospective Universities that you are prepared to commit to studying a demanding subject.
- Choose a subject that will support your study of other subjects, particularly the sciences, Economics, and Business Studies.
- Develop your analytical and problem-solving skills and improve your overall mental agility?

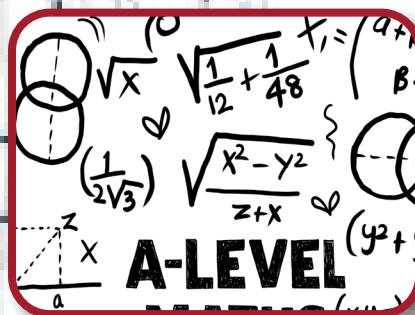
If so then A Level Mathematics is for you! In the past fifty years, old and new applications of mathematical ideas have transformed the way we live. In our current data and technology driven world, mathematicians are in high demand across all modern businesses and industries. Mathematics A Level is well respected by employers and admissions tutors for all degree subjects.

### A Level Mathematics Entry Requirements

7 GCSEs A\*-C including a grade B or above in GCSE Mathematics / Further Mathematics. Due to the academically challenging nature of this subject a Grade A in GCSE Mathematics is strongly recommended, particularly if GCSE Further Mathematics has not been completed.

### This course could lead to careers in:

- Data Science / Data Analysis
- Engineering including Software Engineering
- Finance
- Statistics
- Actuarial Science
- Computing and Games Development
- Teaching
- Accountancy
- Mathematical Medicine
- Meteorology
- Research Mathematician
- Investment Banking



### Course Units

#### At AS Pupils will sit two papers in May / June:

- Paper 1: Pure mathematics (1hr 45 mins)  
Covering areas such as algebra and functions, coordinate geometry, sequence and series, trigonometry, exponentials and logarithms, vectors and calculus.
- Paper 2: Mechanics and Statistics (1hr 15 mins)  
Covering areas such as sampling, presenting and interpreting data, probability, statistical distributions and hypothesis testing, kinematics, forces and Newton's laws.

#### At A2 students will sit two papers in May / June of their final year:

- Paper 1 Pure mathematics (2hr 30mins)  
Covering areas such as proofs, algebra and functions, coordinate geometry, sequence and series, trigonometry, exponentials and logarithms, vectors, calculus and numerical methods.
- Paper 2 Mechanics and Statistics (1hr 30mins)  
Covering areas such as sampling, presenting and interpreting data, probability, statistical distributions and hypothesis testing, kinematics, moments, momentum and Newton's laws.

Note: The full Advanced GCE award is based on students' marks from the AS (40 percent) and the A2 (60 percent) examinations.

# A Level French

**French: This subject is a must for pupils who derive enjoyment and benefit from learning a language.**

Through studying GCE French, students have the opportunity to:

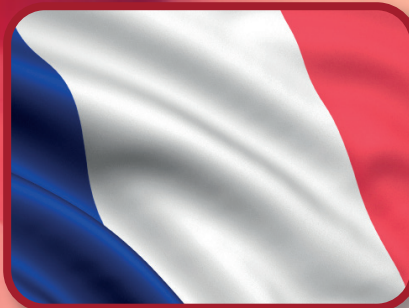
- Develop an understanding of the language in a variety of context and genres
- Communicate confidently, clearly and effectively in the language for a range of purposes
- Develop awareness and understanding of the contemporary society, cultural background and heritage of countries or communities where French is spoken
- Consider their study of the language in a broader content.

## A Level French Entry Requirements

7 GCSEs A\*-C including English, Mathematics and French. A B or above is required in GCSE French.

## This course could lead to:

- International Business
- European Business
- Education
- Translation work and interpreting
- Sales and Marketing
- Journalism
- Law
- Travel and Tourism
- Any field where communication skills are valued



**Studying French helped to build my confidence and communication skills which helped me not only in my school work, but also in my wider life.**

**Past pupil**



## Course Units - 2 at AS and 2 at A2

- **AS 1:** Speaking - this unit consists of two elements.

**Q1:** Presentation

**Q2:** Conversation

These tasks are Externally conducted and assessed.

- **AS 2:** Listening, Reading and Writing - This unit consists of three elements:

**Section A:** Listening

**Section B:** Reading and translation (French to English)

**Section C:** Writing

**There are also three units and two topic areas at A2.**

## AS Topic Areas:

- Relationships: Family life and relationships; Personal and interpersonal relationships
- Culture and Lifestyle: Physical and Mental well-being; Hobbies and interests; The Arts, New technology and Tourism.





# A Level Irish

**Studying Irish will give you a fascinating insight into the world of Irish while also giving you a true sense of identity as an Irish citizen,**

**During the course you will:**

- Develop the ability to communicate confidently and effectively in Irish in both speech and writing.
- Learn about the contemporary society, cultural background and heritage of Ireland and communities where Irish is spoken.
- Develop personally by strengthening your confidence and helping you gain a positive attitude to learning and independent study.
- Draw together different areas of linguistic skills and understanding while developing high order thinking skills.
- Explore and discuss contemporary societal and political issues through the medium of Irish.
- Explore an aspect of Irish society and Irish literature.
- Experience life in the heart of the Donegal Gaeltacht.

## A Level French Entry Requirements

7 GCSEs A\*-C and at least a grade B in Irish.

**This course could lead to:**

- Teaching and lecturing
- Journalism
- Tourism
- The Media and Television
- Government
- Translating
- Marketing
- The security Services
- Financial Services
- International Business



**At AS you will study the following topic areas:**

- Relationships
- Culture and lifestyle
- Irish Grammar

This will be assessed through:

- **Unit 1:** Speaking. This unit consists of a three minute presentation based on one of the topic areas followed by a general conversation for eight minutes.
- **Unit 2:** Listening, Reading comprehension, translation from Irish to English and English to Irish and use of language.
- **Unit 3:** Writing – one extended writing question based on an Irish film or literary text.

*The AS Irish course is worth 40% of the full A level qualification, A2 is worth 60%.*

**At A2 you will study the following topic areas:**

- Young people in society
- Our place in a changing world

This will be assessed through:

- **Unit 1:** Speaking. This unit consists of a six minute discussion based on a research project followed by a general conversation for eight to ten minutes. Topics for the research project include Irish culture, the study of a region of Ireland or a historical period in the 20th century.
- **Unit 2:** Listening, Reading comprehension, a summary question and translation from English to Irish.
- **Unit 3:** Writing – one extended writing question based on a literary text. The literary text will be a poetry collection, a play or a collection of short stories.

# A Level Spanish

## GCE Spanish:

- Will give you a fascinating insight into the world of Spanish, whilst developing the ability to communicate confidently and effectively in Spanish in both speech and writing
- You will also learn about the contemporary society, cultural background and heritage of not only Spain but of other countries and communities where Spanish is spoken
- Your own personal development will also benefit greatly from taking GCE Spanish. It will strengthen your confidence and help gain a positive attitude to learning and independent study
- The AS units can be taken separately as a stand alone qualification or you can combine with the A2 units to gain the full A level qualification.

## A Level Spanish Entry Requirements

7 GCSEs A\*-C including a grade B in Spanish.

## This course could lead to:

- Tourism
- Government and Marketing
- Financial Services
- IT
- Journalism

- Translation work and interpreting

## Higher Education in:

- Teaching
- Spanish Degree



Studying Spanish has allowed me to develop my linguistic and communication skills...thanks to school trips and the support of the language teachers.  
**Megan Herron, Past Pupil**



## At AS you will study the following topic areas:

- Relationships
- Culture and lifestyle
- Spanish Culture

## This unit will be assessed through:

- Unit 1: Speaking. This unit consists of a three minute presentation based on one of the topic areas related to an aspect of a Spanish-speaking country followed by a general conversation for 8 minutes.
- Unit 2: Listening, Reading comprehension, translation from Spanish to English and English to Spanish and use of language.
- Unit 3: Writing. This consists of one extended writing question based on a Spanish film or literary text.

The AS Spanish course is worth 40% of the full A Level qualification, A2 is worth 60%.

## At A2 you will study the following topic areas:

- Young people in society
- Our place in a changing world

## This unit will be assessed through:

- Unit 1: Speaking. This unit consists of a six minute discussion based on a research project followed by a general conversation for 8 to 10 minutes. Topics for the research project include a cultural aspect of a Spanish-speaking country, the study of a region of a Spanish-speaking country or a historical period in the 20th Century of a Spanish-speaking country.
- Unit 2: Listening, Reading comprehension, translation from English to Spanish.
- Unit 3: Writing. This consists of one extended writing question based on a set literary text.



# A Level Religious Studies

Religion plays an important role in our society and can influence what people think, feel and believe. While studying this A Level, students get a broad look at how religion and spirituality form the basis of our culture.

## Course Units:

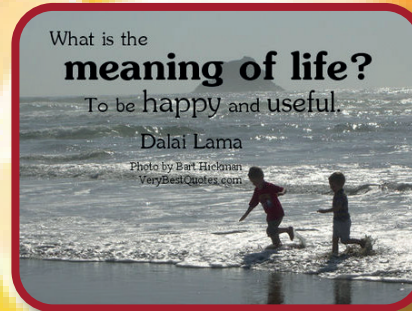
- AS 1 : The Celtic Church in Ireland
- AS 2 : Religious Ethics: Foundations, Principles and Practice
- A2 1 : Themes in Celtic Church; Reformation and Post Reformation Church
- A2 2 : Ethics and society

Choosing Religious Studies will give students a much better understanding of themselves and the society in which we live. Religious studies requires students to be logical, open minded and analytical in

**A Level Religious Studies Entry Requirements**  
7 GCSEs A\*-C. Due to the specific nature of RE A Level it is essential that students achieve at least a grade B in both English and Religious Education at GCSE. Competency and fluency in essay writing is necessary to succeed.

## This course could lead to:

- Teaching
- Nursing
- Law
- Social Work
- Health Care
- Counselling
- Marketing
- Psychology
- Journalism
- Youth and Community work
- Theology



The skills involved in completing an A Level in Religious Studies include:

- Research skills
- Critical judgement
- The ability to work with abstract, conceptual ideas
- An ability to understand both sides and negotiate and resolve conflict
- Problem solving skills
- An appreciation of human diversity, belief systems, cultural and spiritual experiences

At present the year 14 Religious Studies students are hoping to pursue careers in:

- Veterinary Medicine
- Physiotherapy
- Nursing
- Accountancy
- Teaching and politics

They have commented:

// Religious Studies helps in ethical decision making and improves research and critical thinking skills, which is a quality desired by many employers and universities.

Past pupil

//

# A Level Biology

## Do you wish to:

- Develop your interest in and enthusiasm for Biology, including developing an interest in further study and careers in the subject?
- Appreciate how society makes decision about scientific issues and how the sciences contribute to the success of the economy and society?
- Develop and demonstrate a deeper appreciation of, and understanding of, how living organisms interact?

## Then A Level Biology is for you! Choose Biology if you want to:

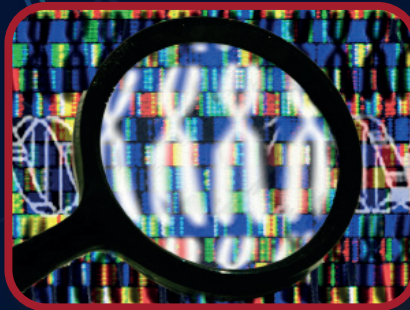
- Work in well-equipped specialist rooms
- Be taught by well qualified staff, experienced in teaching at this level and in preparing students for medical school and related opportunities.

## A Level Biology Entry Requirements

7 GCSEs A\*-C including a GCSE grade B or above in Biology. A Grade B or above in Chemistry would also be useful.

## This course could lead to:

- Research
- Health Care
- Environmental management and Conservation
- Education
- Biotechnology
- Forensic Science
- Politics and Policy
- Business and Industry
- Economics
- Science writing



## Course Content - 3 at AS and 3 at A2

- AS 1: Molecules and Cells
- AS 2: Organisms and Biodiversity
- AS 3: Practical Skills in AS Biology
- A2 1: Physiology, Coordination and Control and Ecosystems
- A2 2: Biochemistry, Genetics and Evolutionary Trends
- A2 3: Practical skills in Biology

Studying Biology helps us to understand the changes happening in our society and developments in medical science such as:

- Cloning
- Genetics
- The Human Genome Project
- Biotechnology
- Ethics

// The knowledge and skills set I developed whilst studying A Level Biology has equipped me for the demands of a degree in medicine  
Ciaran O'Farrell, Past Pupil





# A Level Chemistry

Chemistry is the science that systematically studies the composition, properties, and activity of organic and inorganic substances and various elementary forms of matter.

At AS Level:

**AS 1:** Basic Concepts in Physical and Inorganic Chemistry

**AS 2:** Further Physical and Inorganic Chemistry and Introduction to Organic Chemistry

**AS 3:** Basic Practical Chemistry

At A2 Level

**A2 1:** Further Physical and Organic Chemistry

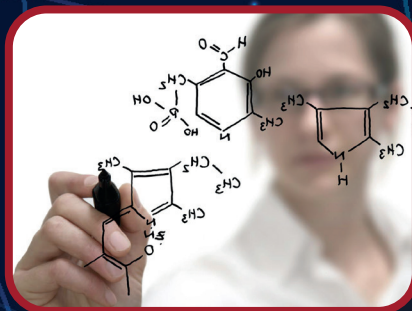
**A2 2:** Analytical, Transition Metals, Electro chemistry and Organic Nitrogen Chemistry

**A2 3:** Further Practical Chemistry

**A Level Chemistry Entry Requirements**  
7 GCSEs A\*-C. A B grade in Chemistry. A B grade in Biology would be useful.

**This course could lead to:**

- Analytical Chemistry
- Biochemistry
- Biotechnology
- Catalysis
- Chemical Engineering
- Chemical sales
- Chemical Technology
- Colloid Science
- Consulting
- Consumer products
- Food Chemistry



Who does it suit?

Chemistry suits students:

- With an inquisitive mind
- Who enjoy problem solving

Chemistry requires good mathematical processing skills and overlaps with both Physics and Biology.

Chemistry is the central, useful, and creative science - it underpins other scientific disciplines.

If you are interested in developing new, revolutionary substances that could improve our health, lifestyle and environment then this course is for you!

//

Chemistry is one of those subjects that what you get out of it reflects the effort you have put in. I worked hard from the start in sixth form and it paid off. I got into my first choice university course.

Past Pupil

//

//

I always liked Chemistry as it came quite easily to me, I loved the theories we covered and we had a great teacher.

Lauren Byrne studying Biological Sciences at Imperial College London

//

# A Level Physics

Physics captures our imaginations and provides us with an understanding of the seemingly fantastic.

It has led to great inventions such as satellites, MRI scanners and nuclear power stations. Physics has many applications in today's society such as: medicine, financial markets, telecommunications, energy resources and mineral exploration.

Studying Physics gives you great job prospects; it is a pathway to all sorts of interesting jobs because of your knowledge, understanding and skills. You can have a choice of careers such as: the space and aerospace industries, medicine, technology, engineering, research and development, the stock market, teaching and/or IT and software industries.

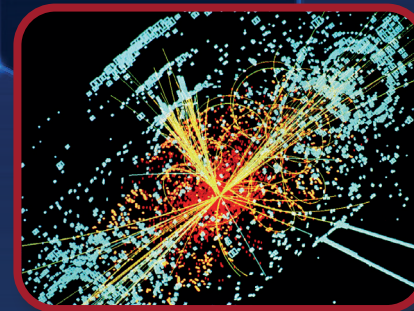
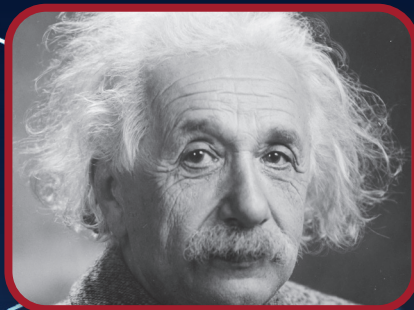
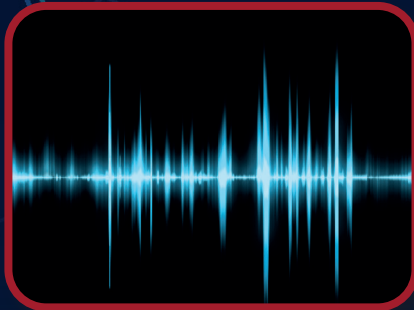
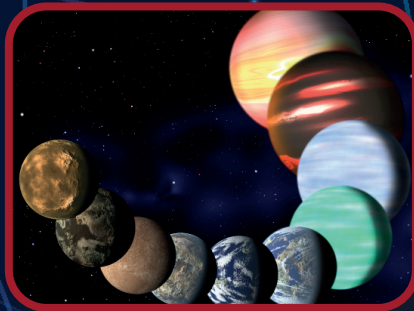
Studying Physics is not only worthwhile but is also a lot of fun!

## A Level Physics Entry Requirements

7 GCSEs A\*-C. B grade or better in Physics is required as well as in Mathematics. A further grade in another science would be beneficial.

## This course could lead to:

- Journalism
- Law
- Finance
- Medicine
- Engineering
- Computer Science
- Physics
- Car Design
- Research
- Architecture
- Banking



## Course Units:

### AS Level

- AS 1: Forces, Energy and Electricity
- AS 2: Waves, Photons and Medical Physics
- AS 3: Practical Techniques

### A2 Level

- A2 1: Momentum, Thermal Physics, Circular Motion, Oscillations, Atomic and Nuclear Physics
- A2 2: Fields and their Applications
- A2 3: Practical Techniques

// Studying Physics to A2 level was extremely rewarding. The knowledge and understanding I acquired have prepared me to rise to the challenges I have met in my Mechanical Engineering degree course

Conor O'Boyle - QUB





## A Level Sociology

Sociology is a contemporary subject, which is very much rooted in the present. It explains the way in which society “Works” and how individuals live together and co-operate through social institutions such as the education system, the family, religious institutions and the law.

Sociology examines the evolution of society and argues that a new type of society is evolving. Students enjoy the subjects as it is constantly evolving and they like to merge the academic side of the subject to current affairs, news and politics programmes which are relevant to boost the top grade in this subject.

It is an exciting and thought-provoking subject because it uncovers unspoken “truths” examining the exploitation of certain social groups like minority ethnic groups, females and the working class and explains through various perspectives, how we do not live in a fair society where everyone has an equal chance to succeed.

### A Level Sociology Entry Requirements

7 GCSEs A\*-C including a B in English Language.

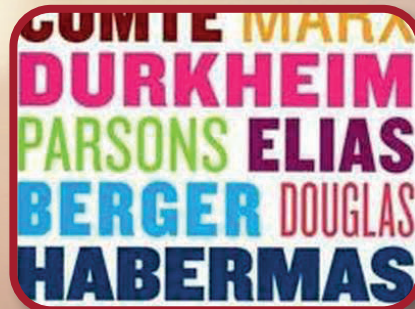
### This course could lead to:

- Teaching (primary and secondary)
- Physiotherapy
- Speech Therapy
- Psychology
- English and Drama
- Sociology
- Geography
- History
- Media Studies
- Computer Science
- Business Studies

// A lot of time I did not feel I was actually doing work because the issues in Sociology were so interesting and got me so fired up when debating them

Leah Colgan, A2 student

//



Sociology is an essay-based subject, requiring a lot of note-taking and independent reading and is a rigorous academically intensive A Level subject.

Course Units - 2 at AS\* and 2 at A2:

- **AS 1:** Education with Methods in Context - 1 hour 30 mins exam worth 60 marks
- **AS 2:** Research Methods and Topics in Sociology - 1 hour 30 mins exam worth 60 marks.
- **A2 1:** Education with Theory and Methods - 2 Hour exam worth 80 marks (33.3% of A Level)
- **A2 2:** Topics in Sociology - 2 hour exam worth 80 marks (33.3% of A Level)
- **A2 3:** Crime and Deviance with Theory and Methods - 2 hour exam worth 80 marks (33.3% of A Level)

Note: This is a stand alone AS qualification.

Note: This is a linear A Level qualification. See page 3 for more details.

// I love the way Sociology retrains your mind to always see all sides of an argument and empathise with under-dogs and those who are labelled in society”

Lauren Fitzpatrick, Past Pupil

//



# BTEC Sport

## BTEC Level 3 National Extended Certificate in Sport.

You will have the opportunity to gain specific knowledge, understanding and skills relevant to the sport and active leisure industry.

This qualification can also be used in conjunction with others to access higher education and more specialist courses.

Assessment will be through an external examination, and externally set task, as well as through assignments set by the course tutor. These will take a variety of formats. In total there are 4 units of which 3 are mandatory and 2 are externally assessed. Mandatory content (83%). External assessment(67%).

Designated assessment criteria must be met to attain the required grade.

It will be important to provide evidence of your skills and knowledge in each unit.

## BTEC PE Entry Requirements

7 GCSEs A\*-C. B grade in GCSE PE is beneficial.

## This course could lead to:

- Sport and Leisure Industry
- Coaching and leadership
- Teaching
- Sport Science and Therapy

## Higher Education in :

- Physical Education teaching
- Physiotherapy
- Sports Science



## Who can study BTEC Sport?

Essentially anyone who achieves the minimum St Louis entrance requirements can choose to study BTEC sport.

However, it is highly recommended that you have studied PE at GCSE level, and have gained a grade B or above.

Students who have not studied GCSE PE can still take BTEC Sport. However, you will need to demonstrate a strong interest in sport and must be prepared to work hard to catch up!

The course suits hard working pupils, and particularly those who are willing to spend time and effort on producing coursework to a high standard.

## Course Units

- **Unit 1 - Anatomy and Physiology** - Written Examination
- **Unit 2 - Fitness Training and Programming for Health, Sport and Well-being** - Task set and marked by Edexcel and completed under supervised conditions
- **Unit 3 - Professional Development in the Sports Industry** - Internally assessed unit set and marked by your teacher

NOTE: A fourth unit will be chosen by your teacher from the range of optional units. This will be an internally assessed marked by your teacher.



# A Level Technology and Design

**Technology and Design:** This subject offers the opportunity for study into the processes involved in harnessing the resources of people and the earth they inhabit through the creation of appropriate artefacts and / or systems.

Are you interested in designing and making products in a range of materials?

Do you want to open up a wide range of career opportunities in the world of work or at degree level in University?

Do you want to improve your chances of a good grade at AS / A2 by choosing a subject with a large coursework content?

Do you want to be supported in a highly trained and motivated staff?

Do you want to use industry standard equipment?

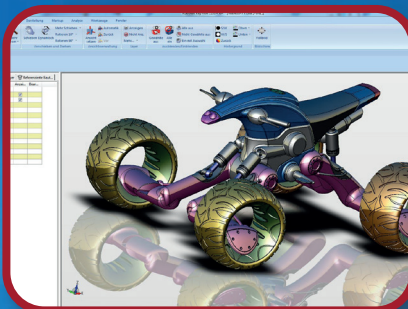
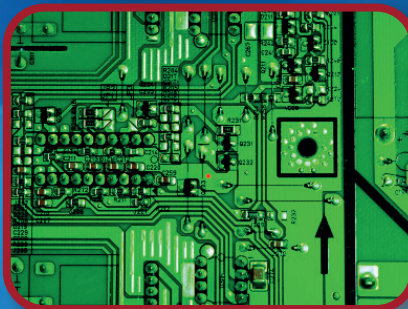
Then Technology and Design could be for you!

## A Level Technology Entry Requirements

7 GCSEs A\*-C including Technology at grade B or higher, English and Mathematics. Study of Art at GCSE may also help.

## This course could lead to:

- Product design / 3D Design
- Industrial Design
- Civil, Electronic, Marine, Systems or Manufacturing Engineering
- Graphics / Fashion design
- Advertising
- Computer and Web Design
- Architecture
- Clean Technology
- Technical Illustrator
- Sports Technology



## Course Units - 2 at AS / 2 at A2

- AS 1: Product Design and Systems Control
- AS 2: Coursework: Product Development
- A2 1: Systems and Control - Product Design
- A2 2: Coursework - Product System Design and Manufacture

## Through studying AS/ A2 Technology and Design students will get the opportunity to:

- Make use of tacit knowledge and reflective practices in order to work with tasks that are challenging and often required definition
- Develop and sustain their creativity and innovative practice
- Produce high-quality produces
- Draw on a range of skills and knowledge from other subject areas

// A Level Technology and Design has given me the foundation to study my degree course.

The theoretical principals and background knowledge offered me a sound base. //

Kory Colgan - BSc Hons Building Surveying - University of Ulster



# BTEC Engineering

## Why Engineering?

Engineering covers a broad variety of roles and it involves the application of scientific principles and practical knowledge to transform ideas and materials into products and systems safely and support them during their lifetime.

This qualification has a focus on a broad range of engineering specialist areas. Learners taking this qualification will study mandatory content covering:

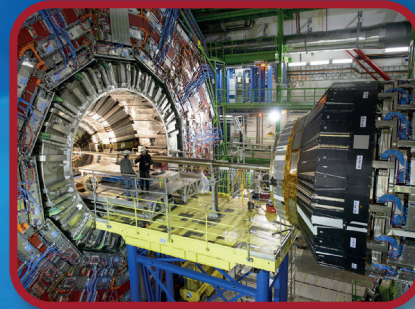
- engineering principles and mathematics
- health and safety, team work and interpreting and creating computer-aided engineering drawings
- design and manufacture of products.

## BTEC Lv 3 Extended Certificate in Engineering

is designed for learners who are interested in a career in the engineering sector and want to progress to further study in the sector. You will be able to combine this with other qualifications, such as a A Level in Maths or Physics, which would allow you to progress to higher education to study engineering or other STEM-related programmes

## BTEC Engineering Entry Requirements

7 GCSEs A\*-C including grade B in Maths and other supporting subjects such as Science and English.



## This course could lead to careers:

- Construction
- Transport
- Cosmetics
- Medicine / Food / Fashion
- Technology

## Higher Education in:

- Higher National Diploma
- A Bachelors degree (BEng) - 3 year course
- A Masters degree (MEng) - 4 year course

## Size and Structure

- Equivalent in size to one A Level.
- 4 units of which 3 are mandatory and 1 is external.
- Mandatory content (75%).
- External assessment (25%).

## Units

- **Unit 1 - Engineering Principles** (120 GLHs) - Mandatory Externally Assessed
- **Unit 2 - Delivery of Engineering Processes Safely as a team** (60 GLHs) - Mandatory Internally assessed
- **Unit 3 - Engineering Product Design and Manufacturing** (120 GLHs) - Mandatory Externally assessed

NOTE: A fourth optional unit will be chosen by the teacher.

The qualification is recognised by higher education providers as contributing to meeting admission requirements for many relevant courses in a variety of areas of the engineering

// Engineering has given me skills such as using specialised technologies, being able to create designs on computer aided packages and manufacture of intricate products to a high degree of accuracy and quality. It was a really enjoyable experience, especially going to a robotic engineering competition in Edinburgh!  
//  
Past Pupil



# BTEC Construction

Are you interested in a course that offers flexibility and a strong work related emphasis that covers knowledge, understanding and practical skills required in the appropriate vocational sector of Construction and the Built Environment?

Then this course could be for you.

Through studying Pearson BTEC Level 3 Extended Certificate will get the opportunity to:

- Make reasoned analytical judgements
- Deploy appropriate advanced techniques/processes/skills
- Take responsibility in planning and undertaking activities
- Communicate effectively using appropriate behavioural and language register

## BTEC Construction Entry Requirements

7 GCSEs A\*-C including Construction and / or Technology, English and Mathematics.

## This course could lead to:

- Architecture
- Surveying
- Planning
- Building services and engineer
- Cavity wall technicians
- Refrigeration engineers
- Thermal insulation engineers
- Civil and Structural Engineers
- Construction supervisors and managers
- Construction workers



## Course Units – 3 in Year 13 - 3 in Year 14

Students must complete 4 units over the 2-year period, 4 are mandatory and 2 are external. Mandatory content = 100%, External Content = 66%.

### Units

- Unit 1 - Construction Principles (120 GLHs) - Mandatory Externally Assessed Exam - Learners demonstrate an understanding of the underlying principles used in the design, construction and refurbishments of buildings and infrastructure.
- Unit 2 - Construction Design (120 GLHs) - Mandatory Externally Assessed Controlled Assessment - Learners will apply the principles and practice of design and construction for low- and medium-rise buildings and structures.
- Unit 4 - Construction Technology (60 GLHs) - Mandatory Internally Assessed - Learners examine the underlying principles and construction methods used in the construction of new buildings and their associated external works.
- Unit 5 - Health and Safety in Construction (60 GLHs) - Mandatory Internally Assessed - Learners will carry out a safe system of work and investigate the significance of safety system reviews, understanding the responsibilities of employees and employers with regard to health and safety in construction operations.

// I enjoyed and was very successful with BTEC Construction and the built environment. It helped me to develop a wide range of skills and attributes to further my studies at University and helped to give me a clear insight into my future pathway.

Past Pupil

## St Louis Post 16 CEIAG Programme

All Year 13 and Year 14 students at St Louis have a timetabled period of Careers Education each week. A variety of real and virtual presentations and information seminars take place facilitated by Industry/Business Representatives, Sentinus, Higher Education Institutions, Business Mentors and Entrepreneurs, Speakers for schools, Student Finance and Welfare Services and Past Pupils. Information about Career Events, Outreach Opportunities at Universities and Colleges and Work Experience schemes are posted on the St Louis Facebook page, emailed to students via their C2kni email account, and posted on Google Classroom.

Students are encouraged to attend virtual Open Days at universities as well as relevant university faculty information seminars and specific career related workshop events. In Year 13 St Louis works in partnership with Work Inspiration NI and a range of NI companies to help support students seeking relevant work experience placements. Students are given leave from timetabled classes throughout the year to engage in relevant, meaningful work placements as companies and businesses often run work placements at various times and operate a competitive selection process. It is also possible to consider work shadowing/work placement on days designated as staff days on the school calendar and advisable to organise a period of work placement in mid-June after the exam period.

Students in Year 14 are fully supported during the UCAS, CAO and St Mary's University College application processes and are also personally guided through the application and interview procedures for Medicine, Dentistry, Veterinary Science, Nursing and Midwifery and courses at Teacher Training Colleges. Information about Higher Level Apprenticeships, Level 3 apprenticeships and post A level employment and training opportunities are disseminated with guidance on the application process. St Louis makes every effort to offer a personalised approach and in addition to timetabled classes students have the facility of Career Guidance sessions during the pastoral period each Tuesday morning.

Pupils are encouraged to discuss career plans with the Head of Department during non-teaching time. The menu of activities is extensive and will alter according to the career needs of the students and the academic curriculum and exam timetable.

Month	Year 13	Year 14
August / Sept	<ul style="list-style-type: none"> <li>• Careers support and advice in relation to post 16 subject options. Review of personal Career Plans</li> <li>• Careers Induction meeting with newly joined students.</li> <li>• Review of personal Career Plans</li> </ul>	<ul style="list-style-type: none"> <li>• UCAS registration and Application workshop</li> <li>• Personal Statement drafts</li> <li>• Open Days at QUB and UU, St Mary's University College, Deloitte Bright Start HLA Applications Open</li> </ul>
October	<ul style="list-style-type: none"> <li>• Career Research &amp; Management.</li> <li>• Reviewing CVs</li> <li>• Charter NI work experience placements</li> <li>• QUB and UU INSIGHT events</li> <li>• Online Ulster Academy courses</li> <li>• Industry visits</li> <li>• PwC, Deloitte/KAINOS careers seminars</li> </ul>	<ul style="list-style-type: none"> <li>• Weekly UCAS Tutorials</li> <li>• Degree / HND course research and selection</li> <li>• OXBRIDGE and CUKAS applicants - early interviews with Principal and dispatch of forms by 15th October</li> </ul>
November	<ul style="list-style-type: none"> <li>• QUB / UU Outreach Events - e.g., Sociology and Social Work, Engineering, Arts and Humanities event.</li> <li>• Applications to PwC insight summer placements</li> <li>• Year 13 Presentation from marketing team at Ulster</li> </ul>	<ul style="list-style-type: none"> <li>• Completion of UCAS references and predicted grades.</li> <li>• Dispatch of application forms to UCAS</li> <li>• St. Mary's University College application tutorials and presentations</li> <li>• CAO Open Days</li> </ul>
December	<ul style="list-style-type: none"> <li>• HE Research continues.</li> <li>• QUB medical seminar (virtual)</li> <li>• CAFRE - Insight event</li> <li>• Sentinus summer research project applications</li> <li>• Nuffield Research Applications Open</li> <li>• QUB Widening Participation Pathways applications.</li> <li>• Sutton Trust Social Mobility Programme opens for application</li> </ul>	<ul style="list-style-type: none"> <li>• Ulster Talented Athlete Presentation in St Louis - application advice.</li> <li>• SRC Higher Education courses such as HNDs/Foundation Degrees, HKA's open for application.</li> <li>• Outreach Presentation from DKIT</li> </ul>
January	<ul style="list-style-type: none"> <li>• Research into; Higher Education, Higher Apprenticeships and Company School Leaver programmes</li> <li>• Presentation from marketing team at QUB</li> </ul>	<ul style="list-style-type: none"> <li>• Skills based CV produced.</li> <li>• Competency based Interview Preparation</li> </ul>



February	<ul style="list-style-type: none"> <li>• Presentation from Liverpool John Moores</li> <li>• University, Loughry College, Trinity College, Scottish Universities etc....</li> <li>• UCAS Convention - EIKON centre Lisburn</li> <li>• Employer/business visit – Collins Aerospace, Graham Academy, MJM Group.</li> <li>• QUB Science event</li> </ul>	<ul style="list-style-type: none"> <li>• Higher Education Finance Conference</li> <li>• Life skills: Budgeting and money wise seminar</li> <li>• HLA Big Apprenticeship Event at SRC Newry</li> </ul>
March	<ul style="list-style-type: none"> <li>• QUB Dentistry event</li> </ul>	<ul style="list-style-type: none"> <li>• Responding to university offers</li> <li>• QUB Student Welfare and Money Matters Presentation</li> <li>• Accommodation: Student housing/becoming tenants</li> </ul>
April / May	<ul style="list-style-type: none"> <li>• Formal Personal Career Plan</li> </ul>	<ul style="list-style-type: none"> <li>• Final CF and CI confirmed with UCAS</li> <li>• Preparing for transition - past pupils presentations</li> </ul>
May / June	<ul style="list-style-type: none"> <li>• Work experience Post Exams in June</li> </ul>	<ul style="list-style-type: none"> <li>• Accommodation bookings at QUB / UU / Stranmillis</li> </ul>
July	<ul style="list-style-type: none"> <li>• Sentinus four-week research placements</li> <li>• PwC summer inside week</li> </ul>	

### Selecting Post 16 options

Large numbers of students are applying to universities resulting in higher levels of competition for reduced places on degree courses at NI universities. The lower tuition fee in NI universities has resulted in a higher demand for places and as a result the grade requirements for many popular courses have increased. The competition for Higher Level Apprenticeships with Finance/Construction and Engineering/IT companies has also increased significantly in recent years. It is therefore important to engage in careers research and consider Post-16 subject options very carefully.

The most important questions you need to ask when choosing Post-16 subjects are:

- What subjects do I require for the future career path I am considering?
- Which subjects will I enjoy most and potentially gain the highest level of success in?
- Should I choose general or Applied A levels or Applied courses such as the BTEC Level 3 National Extended Certificate / AQA Level 3 Extended

### Certificate?

- Are there any A Level Subjects or Vocational Courses that are NOT ACCEPTABLE to University Admissions departments within my academic profile?

The answers to these questions will come from reflecting on your skills and interests, evaluating your past academic performance and learning experiences as well as analysis of new A-Level subjects and applied courses on offer. Mature decisions are made when students spend time researching the options in the light of past performances and future career plans. Students are advised to engage in discussion with parents, teachers and careers advisors before finalising Post-16 choices.

### How many subjects will I select?

Students are normally required to select a maximum of four subjects for post-16 study. Students may drop an A level subject at the end of Year 13 and accept an AS grade in this subject. Applied courses such as National Extended Certificates are accredited after two years of work. A student is not advised to opt out of a BTEC Level 3 National Extended Certificate / AQA Level 3 Extended Certificate at the end of Year 13, but if they do so, they may be awarded a Certificate with associated UCAS points acknowledging achievement in 2/3 units of work in Year 13.

Before considering a reduction of four to three subjects in Year 14, students must consult a careers advisor and research degree entry profiles very carefully.

There are five main points to consider:

Competitive and popular courses in the South of Ireland currently have such a high entry profile that students may require four subjects to meet the points requirement.

- Applicants to prestigious universities such as Oxford, Cambridge, and London Imperial could be given an alternative offer of four A Level grades such as AAAA as opposed to A\*AA/A\*A\*A\*
- Irish universities may not accept Applied A level subjects with a coursework element of 40% or more.
- Applied level 3 courses such as BTEC Level 3 National Extended Certificates / AQA Extended Certificate are unacceptable to all ROI institutions except DKIT  
Queen's University and Stranmillis University and a few Russell Group Universities in the UK will accept only one applied course in an applicant's academic profile. St Mary's University College will accept only one applied course for teaching but will consider two applied courses for entry to the BA

Hons Liberal Arts degree.

- Universities may request a particular grade profile for BTECs and AQA Level 3 Extended Certificates courses instead of relying solely on an overall level or grade assessment.
- Many of the Russell Group of 24 UK universities accept only GCE A Level subjects. Please refer to the admission guidelines at all institutions for further clarification.

### Specific Subject Requirements

A large range of careers prospectuses are available from the Careers Department. Year 12 students are welcome to take copies of the University of Ulster and Queen's University prospectuses to research degree course requirements however the most up to date version of each prospectus is online at [www.ulster.ac.uk](http://www.ulster.ac.uk) and [www.qub.ac.uk](http://www.qub.ac.uk). Students are strongly encouraged to take time to engage in independent career research.

The entry profile for many degree courses will state only the grades or UCAS points required. In this situation many subject combinations are deemed appropriate. Some degrees require specific A-level subject combinations and the information presented below is a basic guide to some of the requirements for entry.

Students considering any of the degree courses outlined below are advised to research requirements across a range of university websites as not all universities apply the same criteria.

**Veterinary Science** – A number of universities accept two A-level Science subjects and one other academic subject but other universities require three A-level Science subjects or alternatively two A Level Science subjects plus Maths. (Minimum grade requirement AAB with a grade A preferred in Chemistry). Most universities will require applicants to have either studied 3 science subjects at GCSE level or have completed a course in Double Award Science.

**Medicine** – A number of universities accept two A-Level Science subjects but others require three A-level Science subjects. The minimum A-level grade requirement is AAA along with an AS grade A in a fourth subject. (Grade A required in A level Chemistry). All universities will require applicants to have either studied 3 science subjects at GCSE level or have completed a Double Award in Science.

**Pharmacy** – Two Science A-levels and one other A-Level subject.

(Minimum grade requirement is AAB with a grade A in Chemistry preferred in some universities, essential for others. Biology is preferred as the second Science subject).

**Dentistry** – A minimum of two A-Level Science subjects to include Chemistry. If Biology is not taken at A2, an AS Biology at grade B is required. (Minimum A-Level grade requirement AAA along with an AS grade A expected in a fourth subject. Grade A expected in A2 Chemistry). All UK universities will require applicants to have studied 3 science subjects at GCSE level or have completed a course in Double Award Science.

**Dietetics** – Two Science A-level subjects from Chemistry / Biology / Physics / Home Economics / Mathematics with Chemistry preferred in many institutions. \*Students should have studied DA Science at GCSE Level or alternatively passed a GCSE In Chemistry.

**Engineering** – Most Mechanical, Aeronautical, and Civil Engineering programs require students to have an A-Level in Mathematics along with an additional subject selected from Physics, Chemistry, Biology, Engineering, or Technology and Design. Additionally, a limited number of universities allow a combination of Design Technology and Engineering for entry into specific BEng Engineering courses. Thorough research is advised prior to making subject selections in year 12.

**Computer Science** – Universities place a strong emphasis on A Level Mathematics in addition to A levels in Computing / Software Systems Development and other Science based subjects. \*Please note that a BTEC Level 3 National Extended Certificate in IT Is NOT ACCEPTED as an alternative to an A Level in Computer Science.

**Physiotherapy** – One A-Level Science Subject (Biology, Chemistry/ Physics) or Mathematics required.

**Radiography/Radiotherapy** – One A-Level Science Subject required. Applicants must have GCSE Physics or Double Award Science.

**Quantity Surveying and Commercial Management** – The admission criteria for QS stipulate that a student must achieve a minimum of ABB if they are presenting one of the specified subjects: Mathematics, Physics, Chemistry, Biology, Engineering, or Construction. If an applicant does not study any of these subjects, the entry requirement becomes AAA.



**Optometry** – Two A-Level Science subjects from Chemistry / Biology / Physics / Maths. Applicants must have GCSE Physics or Double Award Science.

**Environmental Health** – A grade A is expected from one science based subject Physics / Chemistry / Biology / Maths or Nutrition and Food Science.

**Teaching** - Applicants to St Mary's University College may require AAB grades or equivalent and there are specific A level subject combinations that must be researched. In England, the A level entry requirements for teacher training courses range from ABB– BBC. All applicants are expected to have a grade C or higher in English, Maths and Science. Some institutions will favour a grade B in English and Maths.

**Nursing and Midwifery** - Some competitive Nursing and Midwifery degree courses in the UK may favour students with an AS or A2 Biology. All Nursing and Midwifery degree courses require a minimum grade C in English Language. All Midwifery degree courses require a grade A/B in GCSE Mathematics (QUB expect a grade B in mathematics) and a grade B at GCSE Science.

**Psychology** - A grade B in GCSE Mathematics is required for applicants from 2023 onwards.

**QUB Management school** - All applicants to degree courses in Actuarial Science, Accounting, Business Management, Business Economics, International Business with a language and Finance at Queen's must have a grade B in GCSE Mathematics.

\*It is not possible to detail subject specific guidelines for all UK degree courses and students are advised to check subject choices with a careers advisor and university admissions departments before finalising options.



## Pupil Profile



**Name** Patrick Brady

**University** BSc Hons Biochemistry

### A Levels Achieved

A Level Biology / A Level Chemistry / BTEC Level 3 National Extended Certificate in Sport / AS History (cashed in)

"I have many fond memories of my time at St Louis. My 7 years were thoroughly enjoyable. I made great friends and I had some wonderful experiences. The academic education I received was exceptional, and I actively participated in all the football teams during my time at the school.

St. Louis played a significant role in my admission to Queen's University, where I am currently pursuing a degree in Biochemistry."



## UCAS / Other Tariff Point System

Not all universities and colleges use the UCAS Tariff. Many prefer to express their entry requirements and make offers in terms of qualifications and grades rather than in Tariff points. Around one third of course entry requirements refer to the Tariff. In Northern Ireland, the University of Ulster and Queen's University, Belfast do not use a tariff point system and express offers in terms of grades or levels.

### GCE A Level

Grade	Tariff Point
A*	56
A	48
B	40
C	32
D	24
E	16

### GCE AS Level

Grade	Tariff Point
A	20
B	16
C	12
D	10
E	6

### BTEC National Extended Certificate in Construction / Engineering / ICT / Sport AQA Level 3 Extended Certificate in Applied Business

Level	Tariff Point
Distinction *	56
Distinction	48
Merit	32
Pass	16

Level	Tariff Point
Distinction *	56
Distinction	48
Merit	32
Pass	16

### BTEC Certificate in Construction / Engineering / Sport / IT & AQA Level 3 Certificate in Applied Business

Level	Tariff Point
Distinction *	28
Distinction	24
Merit	16
Pass	8

### Certificate of Personal Effectiveness (CoPE)

Grade	Tariff Point
Pass	16

### Music Qualifications

#### Certificate in Graded Examination in Music Performance

Grade	Tariff Point		
	Grade 8	Grade 7	Grade 6
Distinction	30	16	12
Merit	24	12	10
Pass	18	10	6

#### Certificate in Graded Examination in Music Theory

Grade	Tariff Point		
	Grade 8	Grade 7	Grade 6
Distinction	10	8	6
Merit	9	7	5
Pass	8	6	4

### Speech and Drama Qualifications – graded qualifications

Grade	Tariff Point		
	Grade 8	Grade 7	Grade 6
Distinction	30	16	12
Merit	27	14	10
Pass	24	12	8

### Speech and Drama – Performance Studies

#### LAMDA Certificate in Speech and Drama: Performance Studies

Grade	Tariff Point
Distinction	16
Merit	12
Pass	8

### OCN NI Level 3 Award in Youth Work Practice – 12 credits

Grade	Tariff Point
Pass	8



### CAO Tariff Tables

Universities in the republic of Ireland do not accept applied courses such as BTEC Courses or AQA Level 3 Extended Certificates .

A level Maths, if offered as one of your best three A levels, will bring in 25 extra points.

\*Dundalk Institute of Technology (DKIT), is the only institution to accept BTEC and AQA Level 3 Extended Certificates and it operates a different tariff system as shown below.

#### ROI Universities

Grade	GCE A2 (best 3 A2 Levels only)	GCE AS (if 4th subject is at AS level)	4th A2 Level (if 4th subject at A2)
A*	185	Not Applicable	45
A	156	26	38
B	131	22	32
C	106	18	26
D	84	14	20
E	63	11	15

#### ROI Institutes of Technology other than DKIT

Grade	GCE A2 (best 3 A2 subject grades only)	GCE AS or 4th A2 subject
A*	180	Not applicable
A	150	62
B	130	52
C	100	42
D	65	34
E	45	25

#### Dundalk Institute of Technology (DKIT) Tariff points for 2022

Grade	GCE A2 (best 3 A2 subject grades only)	GCE AS or 4th A2 subject
A*	175	Not applicable
A	165	75
B	140	65
C	120	50
D	100	35
E	50	20

DKIT accepts the following Applied Courses:

BTEC / AQA Level 3 Extended Certificate

BTEC Level 3 National Extended Certificate (4 modules) is equivalent to 1 A-Level Max Score: 165

\*Further details on how points are awarded for applied courses can be found within the DKIT admissions policy on their website. [www.dkit.ie](http://www.dkit.ie)

It Is Important to check out specific course entry requirements at DKIT. Visit [www.dkit.ie](http://www.dkit.ie) and click into courses and then select entry requirements to discover If there are any GCSE/GCE subjects required within your entry profile.

Quick UCAS Tariff point checker for UK universities outside of Northern Ireland Use the tariff calculator on [www.ucas.com](http://www.ucas.com) to calculate how much your qualifications are worth in points.

<https://www.ucas.com/ucas/undergraduate/getting-started/entry-requirements/tariff/calculator>

## Future job opportunities in Northern Ireland

The following areas are extremely important to the Northern Ireland economy:

- ICT / Computing
- creative and digital media
- business and financial services
- advanced manufacturing and engineering
- renewable energies and recycling
- health and life sciences
- agri-food sector

### ICT / Computing

Information and Communications Technology (ICT), particularly software development, database development, systems architecture and internet specialist skills, is at the heart of every organisation and is central to our daily lives: mobile communication, computer games, touch screen technology, satellite navigation devices – the list is endless. Many large international IT based companies have chosen Northern Ireland as their base in the UK and these include: Liberty IT, Allstate, First Derivatives, Seagate, Fujitsu, and Concentrix. Northern Ireland is one of the world's top destinations for financial technology and R&D investment (Invest NI 2017).

### Creative and Digital Media

Digital is everywhere and is at the heart of the UK economy, underpinning growth through both the development of new technologies and the provision of services to businesses and consumers.

Key market growth areas identified by national and international level research include:

- cloud computing
- mobile technologies
- cross-platform mobile applications
- computer games and digital entertainment
- cyber-security products and services
- green/low carbon IT products

### Business and Financial Services

There are seven different industries within the finance, accountancy and financial services sector. Jobs vary from:

- accountants
- bank officials
- underwriters
- insurance and investment brokers

- actuaries and pensions advisers

### Advanced Manufacturing and Engineering

This includes careers requiring CAD skills, CNC machine operatives, mechanical and electrical engineering skills including at technician level and strategic marketing to name but a few.

### Renewable Energies and Recycling

European and global agreements on more energy efficient technology are creating demand for new engineering solutions. Mechanical engineers are at the forefront of designing everything from better forms of green energy and zero emission engines to the latest breed of nuclear power stations. It's a highly skilled profession but has multiple entry routes.

Careers in this sector include:

- mechanical engineers
- research and development managers
- physical scientists
- design and development engineers
- biological scientists and biochemists

### Health and Life Sciences

The Health and Life Sciences sector is one of Northern Ireland's most important sectors. The sector combines all elements of science and technology that contribute to the discovery and development of products for the healthcare and well-being of humans and animals. Northern Ireland companies and universities have experience in delivering innovative research, products and services to global customers in areas such as Precision Medicine, Diagnostics, Connected Health, Clinical Trials and Data Analytics.

### Agri-Food

Food and drink manufacturing includes the processing of meat and poultry, dairy, fish and shellfish, fruit and vegetables and the production of bakery and drinks products amongst others. Areas of work include bakery, distillery, creamery and ready meals production. Jobs can include:

- laboratory technicians
- food scientists
- biotech
- machine operatives
- butcher
- supply chain manager

Careers research is a vital part of choosing your A Level options. Below are some useful websites to help you make your choices.



## Useful Websites

[www.ucas.com](http://www.ucas.com) - This site allows you to search for courses based on subject, university / college or location. The site also provides links to individual university and college websites.

[www.cao.ie](http://www.cao.ie) - Comprehensive website for searching degrees in ROI and applying online

### Exam Board websites

[www.ccea.org.uk](http://www.ccea.org.uk) - Northern Ireland's Exam Board

[www.aqa.org.uk](http://www.aqa.org.uk) - AQA

[www.edexcel.org.uk](http://www.edexcel.org.uk) - Pearson / Edexcel

[www.ocr.org.uk](http://www.ocr.org.uk) - Oxford Cambridge and RSA

### General Websites for Career Information and projected job trends

[www.investigatecareers.com](http://www.investigatecareers.com) - Password for St Louis Grammar Students - lobster. The site allows you find information about different careers and to research the Labour Market Information and predicted Job trends up to 2027.

[www.careerpilot.org.uk](http://www.careerpilot.org.uk) - a very informative website with career quizzes, information about jobs and career routes, case studies, LMI data and search mechanisms that enable students to link subjects and interests to possible career paths.

[www.nidirect.gov.uk/careers](http://www.nidirect.gov.uk/careers) - Register on the website and use the Careers A-Z facility to research job information and links between GCSE subject choices and careers. Examine information about the skills in demand in NI.

[www.icould.com](http://www.icould.com) - Research different careers and listen to case studies.

[www.careersportal.ie](http://www.careersportal.ie) - Comprehensive website for searching out degree courses in ROI and researching career options.

### Recruitment websites specific to NI jobs

[www.indeed.com](http://www.indeed.com)

[www.nijobfinder.co.uk](http://www.nijobfinder.co.uk)

[www.jobapplyni.com](http://www.jobapplyni.com)

### Websites to support development of CV'S and complete job application forms

<https://www.nidirect.gov.uk/services/cv-builder>

<https://www.studentjob.co.uk/application-tips/cv>

<https://www.savethestudent.org/student-jobs/write-great-cv-template.html>

<https://www.prospects.ac.uk/careers-advice/cvs-and-cover-letters/how-to-write-a-cv>

<http://standout-cv.com/pages/how-to-write-a-cv>

## Universities

[www.qub.ac.uk](http://www.qub.ac.uk) - Queen's University Belfast

[www.ulster.ac.uk](http://www.ulster.ac.uk) - The University of Ulster

[www.stmarys-belfast.ac.uk](http://www.stmarys-belfast.ac.uk) - St Mary's University College Belfast

[www.dkit.ie](http://www.dkit.ie) - Dundalk Institute of Technology

[www.nui.ie](http://www.nui.ie) - The National Universities of Ireland website

[www.ucd.ie](http://www.ucd.ie) - University College Dublin

[www.tcd.ie](http://www.tcd.ie) - Trinity College Dublin

[www.ncad.ie](http://www.ncad.ie) - National College of Art and Design

[www.dcu.ie](http://www.dcu.ie) - Dublin City University

[www.dit.ie](http://www.dit.ie) - Dublin Institute of Technology

[www.ul.ie](http://www.ul.ie) - The University of Limerick

[www.ucc.ie](http://www.ucc.ie) - University College Cork

## Regional Colleges

[www.src.ac.uk](http://www.src.ac.uk) - Southern Regional College

[www.serc.ac.uk](http://www.serc.ac.uk) - South Easter Regional College

[www.belfastmet.ac.uk](http://www.belfastmet.ac.uk) - Belfast Metropolitan

## General sites for researching Universities

[www.opendays.com](http://www.opendays.com) - A directory of university and college open days at UCAS universities.

[www.thecompleteuniversityguide.com](http://www.thecompleteuniversityguide.com) - This site allows you to compare university ratings and investigate subject league tables. It will give a valuable insight into life at a range of UK universities.

[www.push.co.uk](http://www.push.co.uk) - A quick and often humorous insight into the different universities

[www.unistats.com](http://www.unistats.com) - This site brings together key sources of official information and is intended to help students compare institutions and subjects.

[www.discoveruni.gov.uk](http://www.discoveruni.gov.uk) - A site which allows you to explore information from former graduates. The information provided includes; student satisfaction with the quality of teaching and assessment methods, student opinion on the level of academic support and the resources and organisation and management of the course. Details also include the % who remain on the course after year 1 and graduate earnings and employment details.

[www.hotcourses.com](http://www.hotcourses.com) - A course database with search facilities

[www.university.which.co.uk/courses](http://www.university.which.co.uk/courses) - Support on finding out about a vast range of university degree courses.

[www.bestcourse4me.com/explore/](http://www.bestcourse4me.com/explore/) - Support on searching out courses at university and comparing options.

## Frequently Asked Questions

**Q How many AS Levels / Post 16 courses do I need to study in the first year of St Louis 6th form?**

**A** We expect most students to study a combination of 4 general /applied A level subjects or BTEC / AQA Applied subjects in the first year. Pupils may combine applied / BTEC / AQA courses with A levels to a maximum of 4 subjects. However, pupils should be cautious of choosing more than two applied courses if you are thinking of applying to St Mary's University College, Stranmillis, Queen's or other Russell Group Universities.

**Q How many subjects do I study in Year 14?**

**A** Most students continue to study 3 A2/ Applied subjects in Year 14, but where it is appropriate, it is possible to continue with four. There is an on-going guidance process throughout the two years which focuses on your future plans and ambitions, and we tailor your curriculum accordingly. We give a personalised approach throughout.

**Q What is the difference between AS and A2?**

**A** AS levels are qualifications in their own right. You can cash them in at the end of Year 13 and you will have achieved 3 or 4 AS Levels.

**Q What is a linear A Level?**

**A** See page three for more details. This new form of A Level has been introduced for some UK Examination Boards.

**Q What are BTEC Subsidiary Diplomas and AQA Level 3 Extended Certificates?**

**A** BTEC and AQA Extended Certificates are post-16 courses equivalent to A Levels. This option offers a vocational route and a more enjoyable route for those who prefer a portfolio-based course with only one examination-based module.

**Q What is an Applied A Level?**

**A** Applied A Levels are a post-16 course. This option offers a more applied / vocational route and a more enjoyable route for those who prefer a portfolio based course. These are more often externally assessed through coursework or a small number of examinations.

**Q Do I study all my subjects at the St Louis site?**

**A** Performing Arts, Moving Image Arts, and Spanish will be taught at Kilkeel High School. Engineering and Moving Image can be taught in both St. Louis and Kilkeel High, the location will be advised each year.

**Q What is the difference between school and St Louis 6th Form?**

**A** There is separate accommodation for use exclusively by 6th Formers. This includes dedicated study facilities; a 6th form common room with music, comfortable sofas; dedicated IT facilities; the ability to use your own devices to access the school's wireless network in the study room and access to the fitness suite in your free periods. Sixth Form prefects are elected every year. Head students are also chosen, and they represent Sixth Form pupils on the school council and the school at public events. There are also other possibilities to take on responsibility including roles such as Deputy Head Student, prefects and bus monitors. All Sixth Form pupils are expected to mentor a Year 8 pupil.

**Q What extra-curricular activities can I take part in?**

**A** There are a great number of after school and extra-curricular activities you can take part in which include: Gaelic Football, Camogie, the Choir, Debating Society and Public Speaking, Jazz / String ensemble, entrance to numerous competitions including SENTINUS, the Texaco Art Competition and many more. You may also use the ICT facilities after school or practice your music skills in the rehearsal rooms.

**Q Once I have my results, what happens next and when do I find out whether I have a place in St Louis 6th Form?**

**A** If you are not already a St. Louis pupil you must make an afternoon appointment at the school on the day the results come out. You will then be given a time to visit the school, accompanied by a parent or guardian, for a short interview with a member of the Senior Management Team. You will also be asked to bring your results slips, previous two school reports, birth certificate and any other supporting documentation you may have for example certificates or awards, progress files etc.



# Pupil Profile



**Name** Gabriela Handzhieva

**University** BEng Hons Biomedical Engineering

**A Levels Achieved**

Biology / Chemistry / Maths

"I changed schools and joined St Louis to study A levels and I enjoyed every second of my time there. The standard of teaching, the enrichment opportunities, the guidance provided and the value placed on you as a student is superb. I was accepted in Ulster University to study Biomedical Engineering and I credit my success to my teachers who believed in me every step of the way and taught me it's worth taking risks to achieve your goals!"



# Pupil Profile



**Name** Daniel Speers

**University** Business Management degree at QUB

**A Levels Achieved** A Level Business Studies, A Level Geography and BTEC level 3 National Extended Certificate in Sport

"I had the privilege of spending seven great in St. Louis, and appreciate the education, support, and encouragement I received. I made great friends and great memories not least the fantastic ski trip and I achieved the high grades required for my Business Management degree at QUB."







How to find us  
151 Newry Road  
Kilkeel  
County Down  
BT34 4EU

(028) 4176 2747  
info@stlouis.org.uk



GPS

54.065238

-6.031312



Follow us on Twitter @stlouisgrammar



Visit our Facebook site: <https://www.facebook.com/stlouisgrammarschool/>



Watch us at <http://www.youtube.com/stlouisgrammarschool>



Visit our school website at <http://www.stlouis.org.uk>

www.stlouis.org.uk